

CASE STUDY

Stratford Gas Yard & Pipeline

OUR CLIENT: Contact Energy NZ

INDUSTRY: Oil and Gas

VALUE: NZ\$10M

OVERVIEW: The gas yard was upgraded to accept a new 18 inch pipeline from the Ahuroa gas storage facility. The yard was controlled from three separate control locations; a local operator panel, an HMI in the power station control room and an HMI at a remote oil production station. Each location utilised different HMI technology.

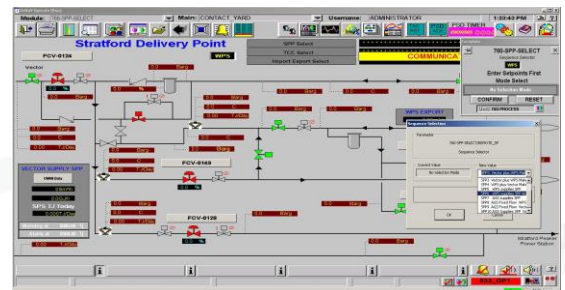
The aim of the project was to program, test and commission twenty one different switching sequences and install new equipment to allow simplified selection of gas routing. The routing was to be selectable from the three separate control locations, supplying four end users.

ENGINEERING: ECL engineers developed, tested and commissioned the systems, supplying all the required documentation. A Rockwell Control Logix PLC and Panelview HMI was utilised for local control. A Hima HIMatrix F35 SIL3 rated safety PLC was integrated into the existing Hima HIMax SIL3 rated safety shutdown system, this allowed SIL rated shutdown capability for the new 18 inch pipeline from the Ahuroa gas storage facility.

The commissioning was staged to minimize the disruption to the daily running of the yard.

OUTCOME:

- Operations staff now has a simple selection process for re-routing gas between multiple users.
- The project was completed on time, within budget and with no lost time incidents.



NEW ZEALAND

P: +64 6 757 5562 | E: manager@ecl.co.nz
166 Powderham Street | P.O. Box 247 | New Plymouth 4340
New Zealand

WWW.ECL.CO.NZ

AUSTRALIA

P: +61 7 3010 9752 | M: +61 415 864 530
E: manager@ecl.com.au
320 Adelaide Street | GPO Box 111 | Brisbane | QLD 4000

WWW.ECL.COM.AU



